

**RAJA HOUSING LTD.**  
PROPERTY DEVELOPERS & BUILDERS  
ISO 9001:2008 CERTIFIED COMPANY

# RAJA HARIHARAN TOWERS

# RAJA HARIHARAN TOWERS - ACTUAL SHOT



# LOCATION MAP

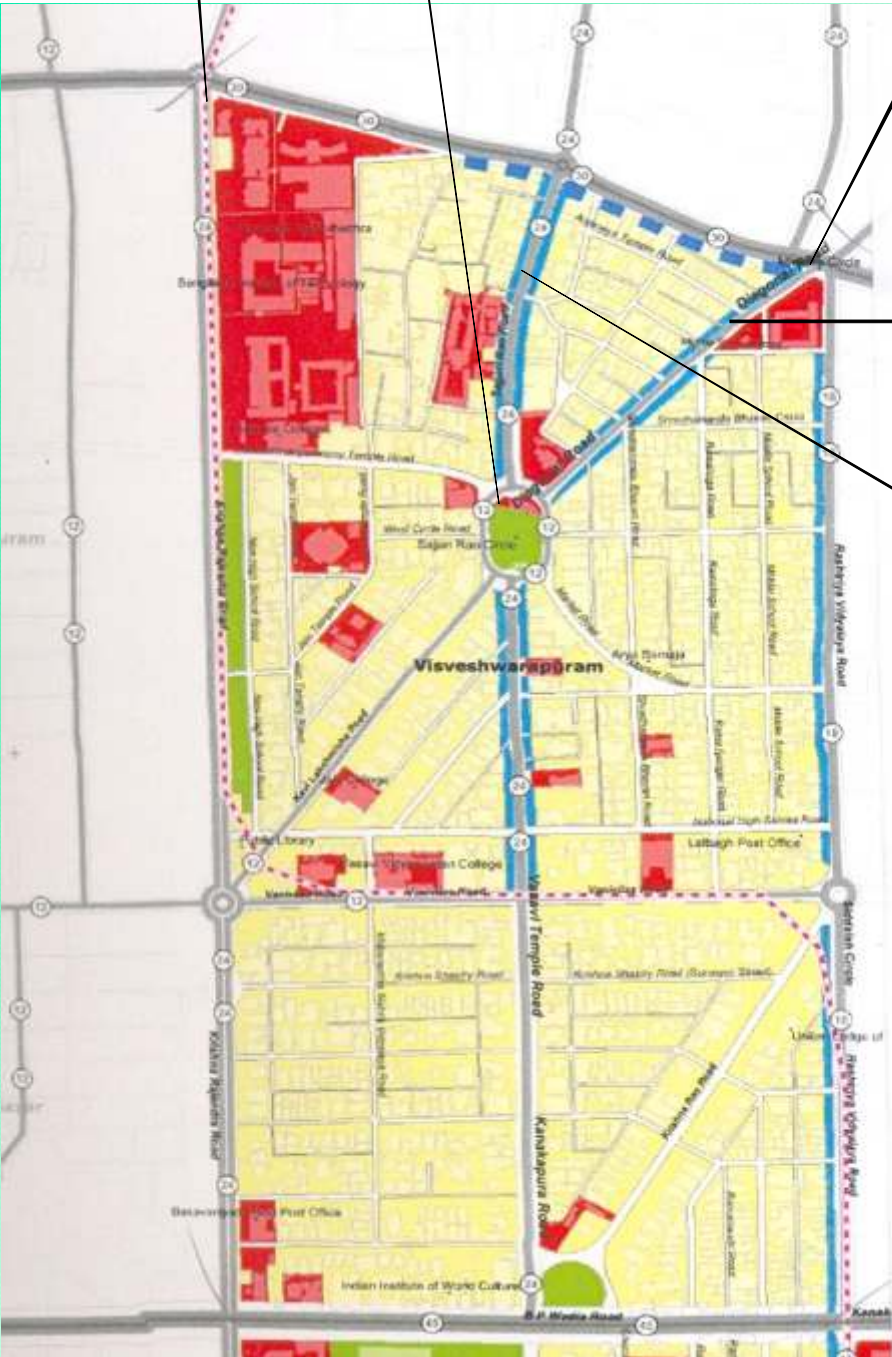
METRO LINE

J.C.ROAD

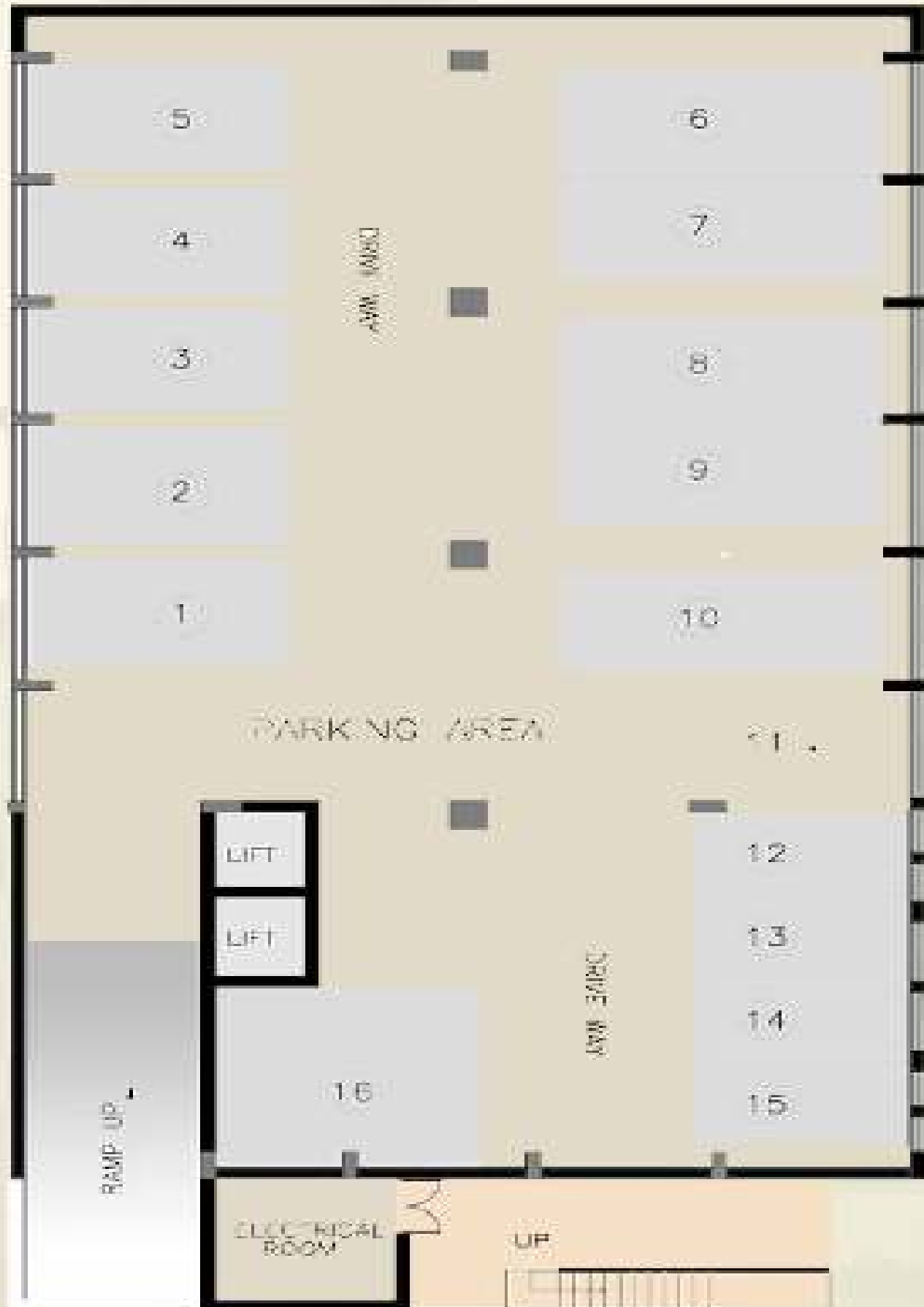
SAJJAN RAO CIRCLE

DIAGONAL ROAD

RAJA HARIHARAN  
TOWERS



# BASEMENT FLOOR PLAN



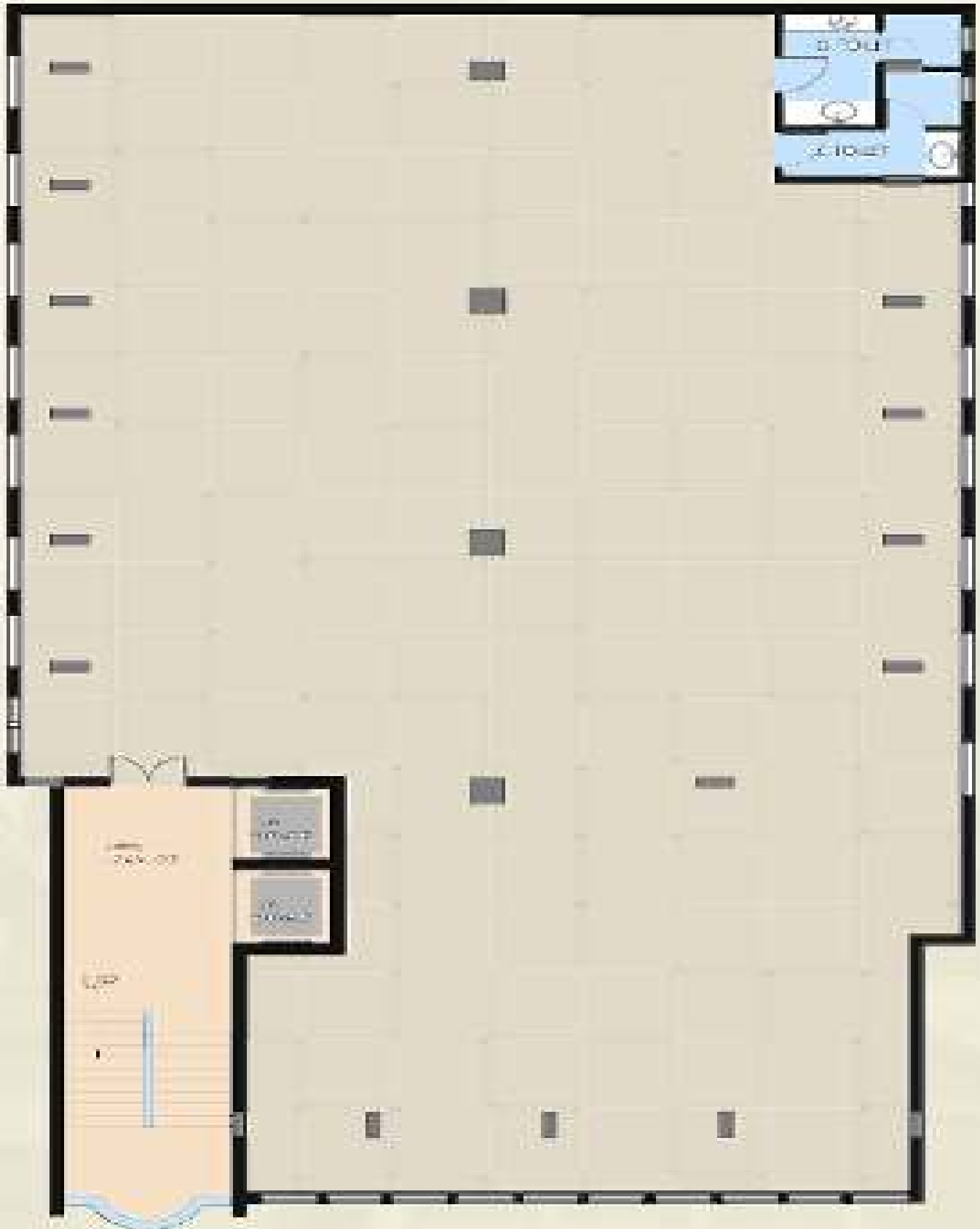
**BASEMENT PLAN**

# GROUND FLOOR PLAN



**GROUND FLOOR PLAN**

# TYPICAL FLOOR PLAN (1, 2, 3, 4, 5, 6 FLOORS)



**TYPICAL FLOOR PLAN**

# AREA STATEMENT

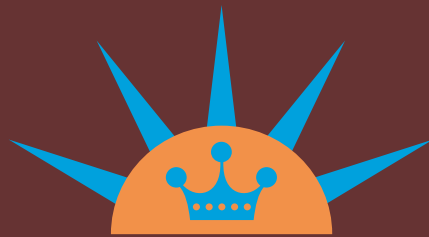
<b>Sl. No</b>	<b>Floor</b>	<b>Area in Sft</b>	<b>Power Allotment</b>	<b>Generator Allotment</b>
<b>01</b>	Ground Floor	4390	51 KVA	51 KVA
<b>02</b>	First Floor	5141	51 KVA	51 KVA
<b>03</b>	Second Floor	5141	51 KVA	51 KVA
<b>04</b>	Third Floor	5141	51 KVA	51 KVA
<b>05</b>	Fourth Floor	5141	51 KVA	51 KVA
<b>06</b>	Fifth Floor	5141	51 KVA	51 KVA
<b>07</b>	Sixth Floor	5141	51 KVA	51 KVA
	<b>Total</b>	<b>35236</b>	<b>357 KVA</b>	<b>357 KVA</b>

## DETAILS OF THE PROPERTY

Plot Area	:60 X 100 = 6000 Sq.Ft
Location	:#51, Sajjan Rao Road, V.V. Puram, Near J C Road, Bangalore- 560 004.
Distance from M.G. Road	:6 Kms Approx.
Building Details	:Basement, Ground + Six upper floors.
Super Built-up Area	:Approx. 35,239 Sq. Ft.
Lift	:Two Nos.
Floor Plate	:5,000 Sft Ground + 6 upper floors.
Car Parking (covered)	:Basement- 16 Nos. available



# THANK YOU



**RAJA HOUSING LTD.**  
PROPERTY DEVELOPERS & BUILDERS  
ISO 9001:2008 CERTIFIED COMPANY

## RAJA HARIHARAN TOWERS



91-080-22104222 / 3 / 4 / 5 / 6.



91-080-22104227.



[sales@rajahousingltd.com](mailto:sales@rajahousingltd.com)



[www.rajahousingltd.com](http://www.rajahousingltd.com)

"Raja Mahalakshmi" F – 2, #12, Basappa Road, Shanthi Nagar, BANGALORE – 560 027.